



**mhs**  
homes group

# Your candidate pack

## Finance, Risk & Audit Chair and Non-Executive Director

Together we are one team | #teammhs

# Letter from Ashley Hook

---

Thank you for your interest in becoming a Chair of FRAC and Non-Executive Director at mhs homes. This is a great time to join our organisation with an exciting opportunity to contribute to the leadership of mhs homes.

The mhs homes group is a charitable housing association. We own and manage over 10,000 homes in Kent. We're unique in being the largest social landlord in the UK not registered with the social housing regulator. We also have a subsidiary, Heart of Medway Housing Association, which owns over 800 homes and is registered with the Regulator of Social Housing.

The housing crisis in the UK is particularly acute in the south east. As a charity, we have a responsibility to use our resources effectively so we can reduce poverty and help those in housing need. Our ultimate ambition is to help end the housing crisis in north Kent.

We have a reputation as a dynamic organisation with entrepreneurial flair and strong social purpose. Our aim is to be a highly visible local landlord which maximises the best of digital opportunities so that our talented workforce can support those customers that need our help most. Our 'Service Deal' transformation programme is critical to helping us increase the level of business agility to achieve this. Much emphasis is also placed on working with local communities and partners. In the next three years we will invest £150 million in building over 900 new homes. We need a strong Chair of FRAC who understands the importance of probity, independence and integrity in key decision making.

If you would like a confidential conversation about the opportunity to be Chair of FRAC and a Non-Executive Director on the mhs Group Board, please contact our retained recruitment advisor at EMA Consultancy, 01926 887272.

We look forward to hearing from you.



# Could you help us end the housing crisis in north Kent?

Decent housing should be a basic human right, but sadly, it's a right that too many people are denied.

We provide secure, affordable homes as a stepping stone to a better future. We have a big ambition, to help end the housing crisis in north Kent. You'll help us by contributing to the strategic leadership of the organisation.

You'll be joining us during the biggest transformation of housing services in our history. We're driving forward a new culture; a culture that re-addresses the balance of a traditional landlord-tenant relationship, and focuses our offering around the digital world.

With an ambitious growth agenda, we're fully committed to making sure the governance structure has the mix of skills required to equip the organisation to meet current and future challenges.

**We're looking for someone with experience of chairing meetings and boards and the ability to demonstrate leadership with a background in finance, risk or audit.**

Interested?  
Keep reading...



# About the role

---

This is an exciting opportunity to get involved in the overall leadership of mhs homes group and makes sure it's:

- Financially strong
- Well managed
- Delivers excellent services

As Chair of FRAC you'll be:

- An experienced chair with the ability to demonstrate leadership
- A background in and detailed awareness of finance, risk or audit systems and procedures
- Experienced in developing and maintaining the highest standards of governance

As an important part of the group Board, together with the other members, you'll be:

- Developing our vision in partnership with the Chief Executive
- Acting as a bridge between us and the outside world
- Developing strategies for growth, new business activities and diversification into areas which link to our core values

The successful applicant will be a proven strategic thinker; a leader with a track record at executive/Board level. We're looking for a person that understands both the role of FRAC Chair and a non-executive and has high level management and governance skills. Developing the road map for the future will involve making strategic choices about which markets and business streams to progress - balancing resources and costs with the need to deliver excellent service and corporate governance obligations.

Read the role profile to find out more about the job

# Terms and conditions

---

## **Chair of FRAC and Group Board Non-Executive Director Summary Terms and Conditions**

Salary: £11,918 per annum

Other benefits:

Travel expenses. Any costs incurred in attending courses, conferences or other events when representing the organisation.

Estimated resource:

Minimum time requirement estimated at approximately 2-3 days per month.

Term of Office:


A 3 year term to a maximum of 3 terms (9 years).

Training:

Induction training after appointment will be provided and will take account of existing skills and knowledge. Time must also be allowed for training and attending events.

### Note

A full statement of the main Terms and Conditions of Employment will be supplied with any formal offer of employment. The above information may be helpful to applicants as a guide but should not be treated as a substitute for a full contract.



# About mhs homes group

---

As well as providing affordable homes to the people who need them most we're also passionate about investing in our communities. Here's how we're organised.

## mhs homes group includes:

### **mhs homes Ltd**

Set up in 2017, mhs homes Ltd is a private company limited by guarantee and a registered charity.

### **Heart of Medway Housing Association Ltd**

Set up in 2010, Heart of Medway is a registered provider with the Regulator of Social Housing and has charitable objectives.

### **mhs community charity Ltd**

Set up in 1999, mhs community charity is a private company limited by guarantee and a registered charity.

### **Chatham Maritime K1 Construction Ltd**


Set up in 1996, Chatham Maritime K1 Construction is a private company limited by shares.

### **Chatham Maritime K1 Developments Ltd**

Setup in 1996, Chatham Maritime K1 Developments is a private company limited by shares.

### **Lord Kitchener Memorial Homes Trust**

Setup in 1962, Lord Kitchener Memorial Homes is a registered charity. mhs homes Ltd is the corporate trustee.



# You can learn more about the group by reading these key documents

Our financial statement and annual report

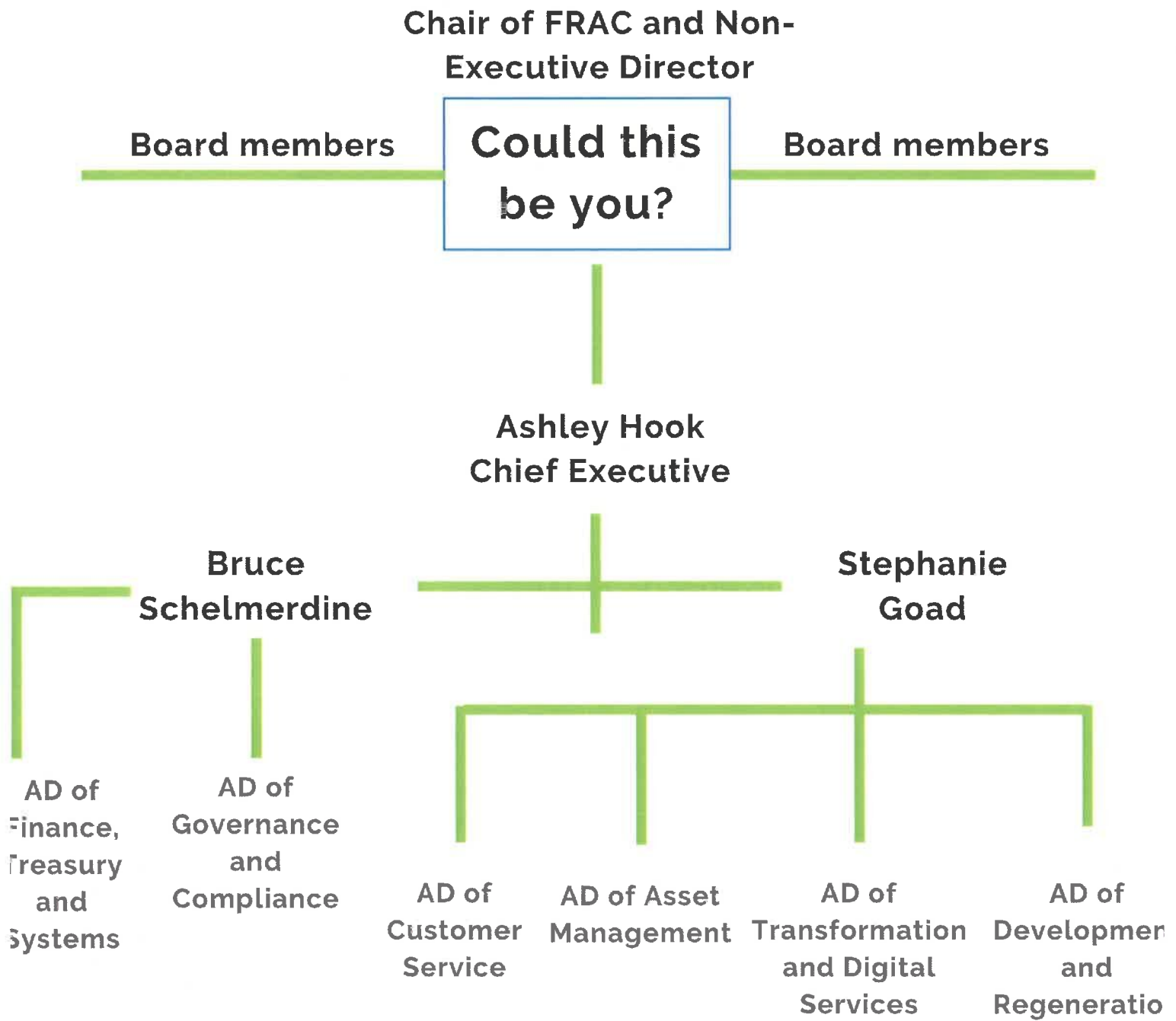
Our three year Strategic Plan 2018-2021

The difference we make

There's more on our website too



# The team



There's a further 260 talented colleagues working across mhs homes

Meet the Board and Leadership Team here



When you join us, you're not just becoming a Board member, you're becoming part of #teammhs.

If you're up for the challenge,

**apply now!**

I look forward to hearing from you.

Ashley Hook  
Chief Executive



